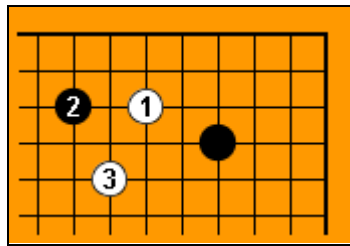


Trick move #4



This trick move has a long history. You can even find it in some Go books. Nowadays O Meien, 9-dan is often playing it on pro scene.

What is the goal of this move?

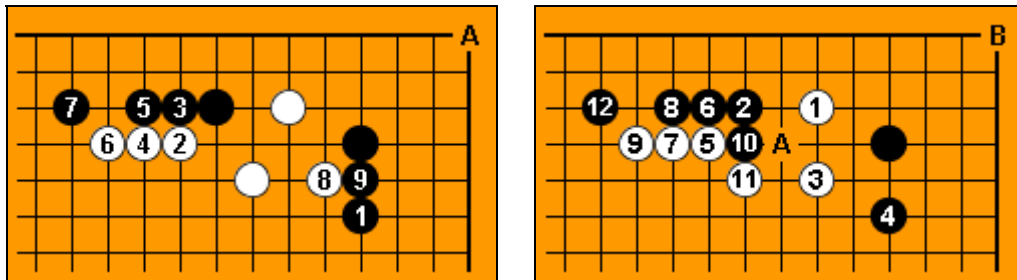
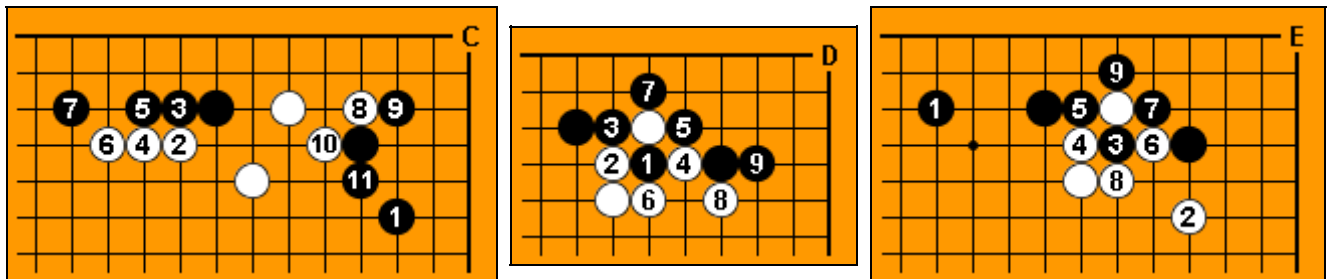


Diagram A: White is trying to create the wall in sente, avoiding any cutting points. We can compare this result with the classic joseki on Diagram B. You can see, that White's wall is not ideal. The weakness at A is large



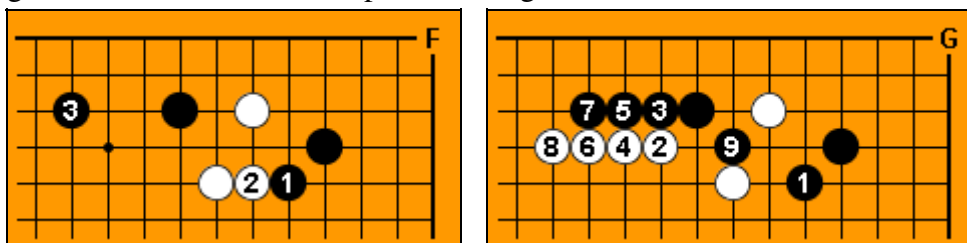
Black has several ways to punish this trick:

Diagram C: Keima answer Black 1 is little bit better than iken-tobi, but White's wall on Diagram C is still strong

Diagram D: Black can think about the attachment. The result on Diagram D is slightly better for him.

Note: Black cannot use this plan, if White has large ko threats

Diagram E: An extension at 1 is powerful. Black can use the same tesuji as on Diagram D, getting a better result than on the previous diagram.



Kosumi at 1 on Diagram F is another possibility. White's group is heavy and she cannot be satisfied. Black's territory on Diagram G is huge. This result is also favorable for Black.

Now you can test it in your games. Enjoy!